



MICHELE D'ERMO

---

ART BEAUTY AND NATURE

The origins of Michele D'Ermo's inspiration relate and depend on the natural world since it remains a continuous and timeless source of beauty. Inspired by the work of Turner, Constable and Whistler she studies the effect of light on the water and the atmospheric changes that occur due to the forces of nature

Her landscapes of organic shapes are minimally bare with recognizable destinations and intangible color fields. The use of horizontal bands of color to create the composition are similar to Rothko's iconic multiform paintings.

A preference of fluctuating states of water and sky infuse her work with feelings of tension and release allowing the lasting image to be atmospheric in nature without sacrificing the structural clarity. The surfaces appear effortless almost transparent in nature allowing for a luminous quality of both sea and sky. Her work captures transitions of light such as day into night or the ever changing horizon line which allow for the movement of fleeting light. The themes are more remembered sensations rather than direct observations of the natural world. The details may fade but the feelings linger. As the work unfolds a timeless image of beauty is created out of memory and imagination.

Michele has exhibited her work for over two decades in museums and galleries in both New York and the Hamptons. These include 1stdibs Gallery at the New York Design Center, Silas Marder Gallery, Guild Hall, Elisa Contemporary Arts, the Parrish Art Museum and Cheryl Hazen Gallery. Her work is often featured in the film and television industries including multiple projects for HBO Films and network television series for NBC and CBS. D'Ermo often collaborates with interior designers and architects on special projects and commissioned works of art.

# ART BEAUTY AND NATURE

---

RECENT PAINTINGS OF MICHELE D'ERMO



HEAVENS GOLD oil on linen 60 x 40





ORANGE CRUSH oil on linen 24 x 18





GREEN ETERNAL oil on linen 60 x 36



TURQUOISE WINDOW oil on canvas 36 x 24





LAST OF SUMMER I oil on canvas 48 x 24



LAST OF SUMMER II oil on canvas 48 x 24





SEA OF LOVE oil on linen 48 x 48



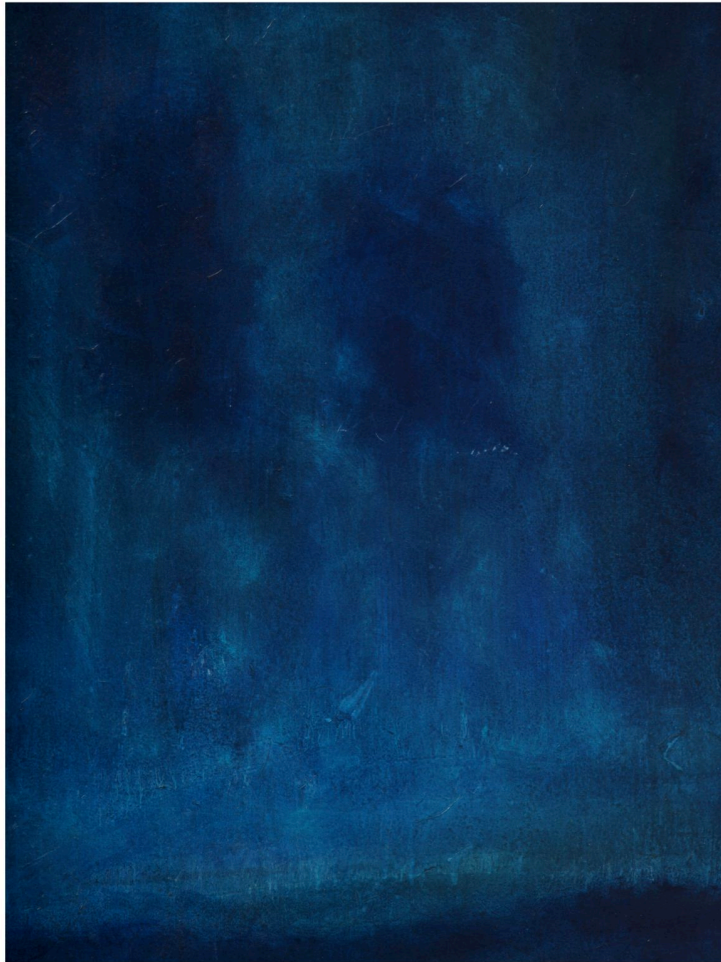


BEFORE THE DELUGE oil on linen 30 x 24





DELUGE oil on linen 36 x 24



BLUE MIDNIGHT oil on board 30 x 24



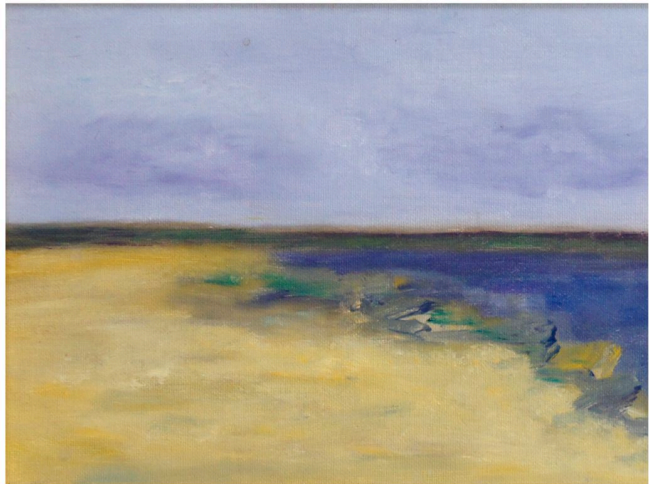
MIDNIGHT WAVE oil on board 40 x 35



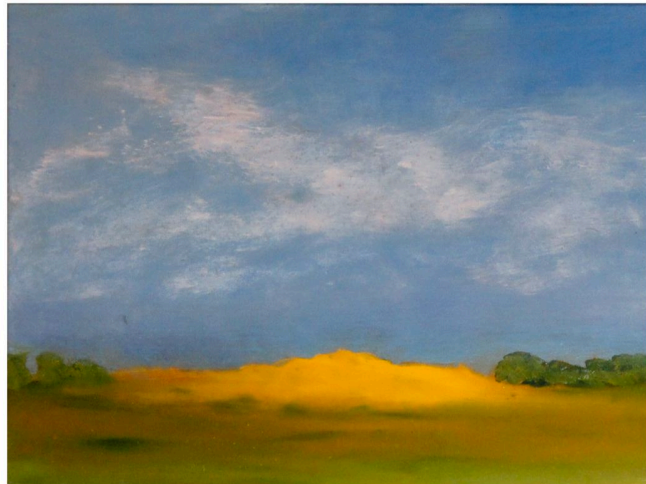


OCEAN WAVE oil on linen 44 x 24





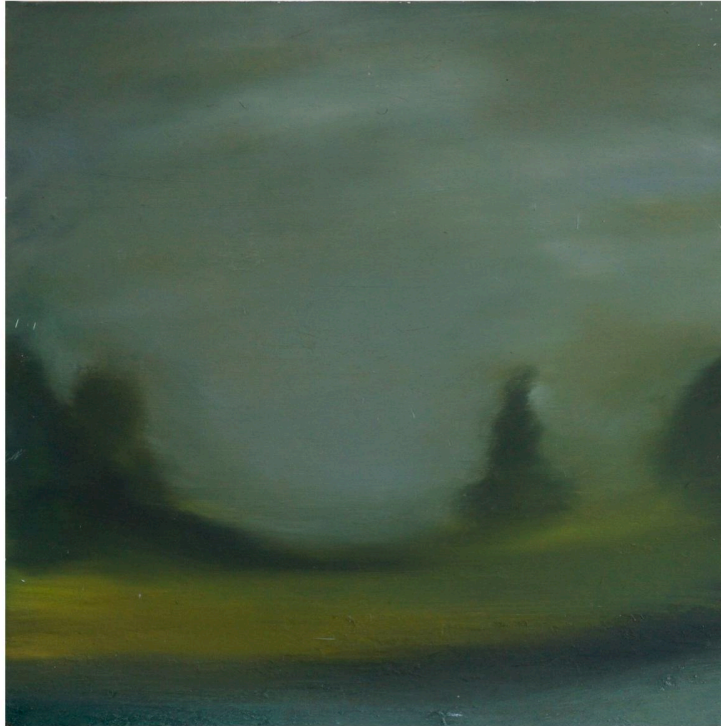
VIOLET SKY oil on linen 18 x 12



MAGIC oil on wood 26 x 16



LAST WAVE oil on canvas 24 x 18

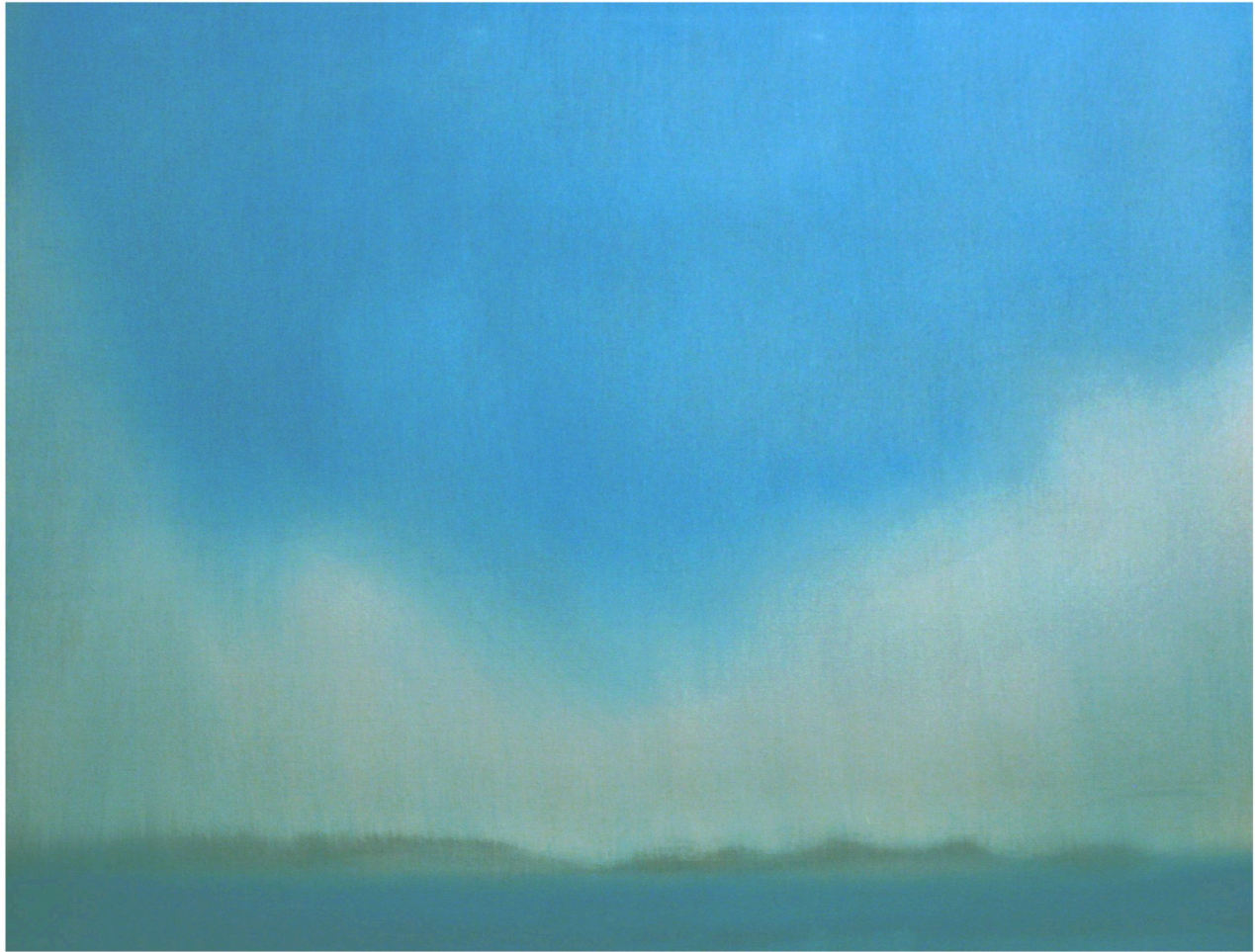


SPIRIT FOREST oil on wood 12 x 12



DISTANT STORM oil on canvas 24 x 24





REFUGE oil on linen 36 x 24





AFTER THE STORM 60 x 40 oil on linen

---

[www.micheledermo.com](http://www.micheledermo.com)